



Electromechanical underground automation for swing gates

# GHOST 200

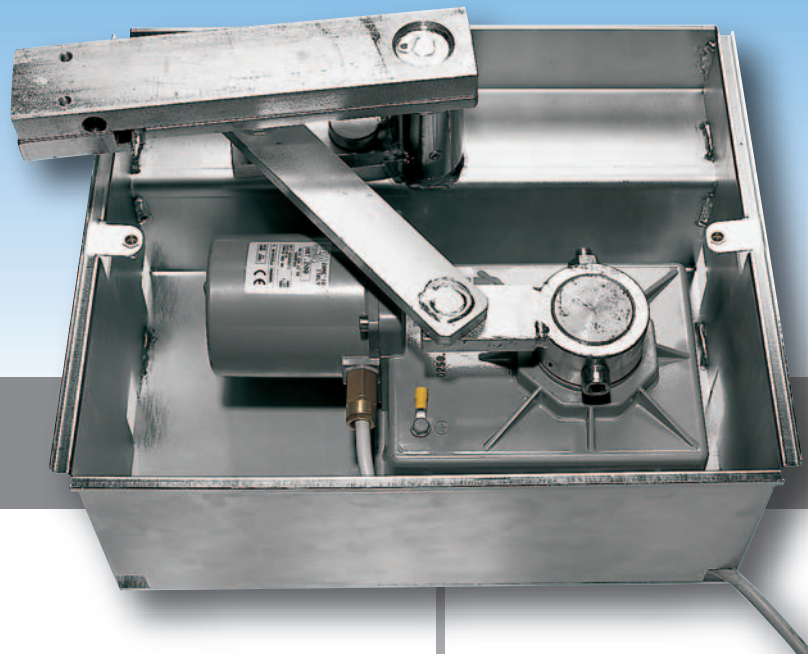
HIDDEN POWER

**GHOST 200** is the **neatest** solution for the automation of swing gates. The **underground fitting** does not modify shape and design of the gate. The **sturdiness** of the operator and the **precision of movement** make Ghost 200 a real elite automation.



RANGE

# GHOST



### For standard solutions

**GHOST 200:** operator  
230V AC.

**GHOST 200L:** operator  
230V AC, slow.

### For solutions in low voltage\*

**GHOST 200/24:** operator 24V DC.

*\*the automation in 24V DC enables programmable limit switches, final slow-down in opening / closing and reverser function on obstacle; moreover a battery backup system enables the operation in case of power failure. The boards can be easily programmed through digital display and 3 buttons.*

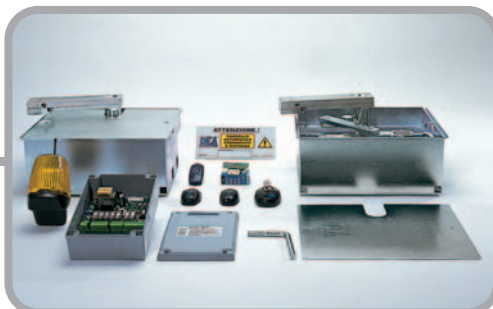
*The DEA System control boards are planned to optimize the performances of Ghost 200 range. It is suggested to use control boards with electronic force adjustment: 202E/3 and 212E (230V AC) or 224RR/C (24V DC).*

## The models

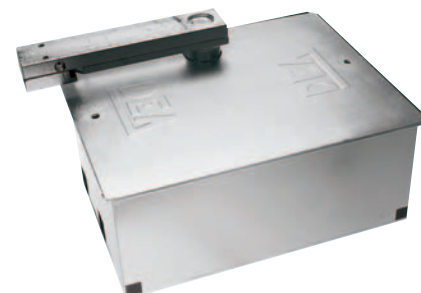
- Electromechanical automation, 230V AC and 24V DC.
- Suitable for leaves up to 3,5 m long.
- Underground fitting.
- Very sturdy and watertight seal.
- Simple and safe unlocking system by special key, both internal and external.
- Grease soaked gear motor.
- Quick and silent.
- Opening up to 180° (optional).
- Galvanized or stainless steel foundation case.



*Simple and safe unlocking system by special key.*



*Kit 200: Complete automation with DEA original accessories.*



*Galvanized or stainless steel foundation case.*